



The Rave EAGLES CLUB

The Eagles Ballroom Technical and Hospitality Information

Venue Main Line: 414-342-7283

Production Manager - Amanda Tullis

Direct Line: (414)342-7283 x-212

or amanda@therave.com

TABLE OF CONTENTS

GENERAL INFORMATION

Contacts	3
About The Rave/Eagles Club	4
About The Eagles Ballroom	5-6
Nearby Hotels, Food, and Attractions	7
Driving Directions	8
Parking	9

VENUE INFORMATION

Crew	10
Load In / Load Out Details	10
Smoking Policy	10
All Ages Policy	10
Pyrotechnics and Special Effects	11
Damage	11
Settlement	11
Buy Outs / Catering	11
Hospitality	12
Merchandise	12
Social Media	12

PRODUCTION

Audio	13
Power	13
Lighting	14
Rigging	15
Stage Plot	16

PICTURES OF THE VENUE

Room and Stage measurements	17
Load In / Load Out path	18-21

MAPS OF THE VENUE

Floor 1 (The Rave II, The Basement)	22
Floor 2 (The Rave Hall, Floor Level)	23
Floor 3 (The Rave Hall, Balcony Level)	24
Floor 4 (The Eagles Ballroom, Floor Level)	25
Floor 5 (The Eagles Ballroom, Balcony Level)	26

CONTACTS

Production and General Advance

Amanda Tullis
Production Manager
Office: 414-342-7283 x-212
amanda@therave.com

Assistant Production Manager/Audio Manager

Jeff Claveau
jeff@therave.com

Hospitality and Dressing Room Coordinator

Gaby Villarreal
gaby@therave.com

Merchandise

Colin O'Connell
colin@therave.com

General Manager/Security

Troy Dal Santo
troy@therave.com

Talent Buyers

Leslie West
leslie@therave.com
Nat Gurski
nat@therave.com

Box Office Manager

Rachael Horkman
rachael@therave.com

ABOUT THE RAVE/EAGLES CLUB

The Rave/Eagles Club is an 180,000 square foot, six level live entertainment complex in Milwaukee, Wisconsin. The building contains multiple venues with capacities ranging from 1,000 to 4,000. Designed by Russell Barr Williamson, student of Frank Lloyd Wright, The Eagles Club was opened in 1927 and was added to the National Register of Historic Places in 1986. It has been hosting concerts under current ownership since 1992.



INTRODUCING THE RAVE PLAZA

The 28,000 square foot front lot of The Rave/Eagles Club has been transformed into an outdoor oasis where fans can relax and soak up the summer atmosphere before and during concerts, weather permitting. Bars, food trucks, and plentiful seating make this a unique amenity for our customers. There is also plenty of room to display and sell band merchandise on The Rave Plaza.



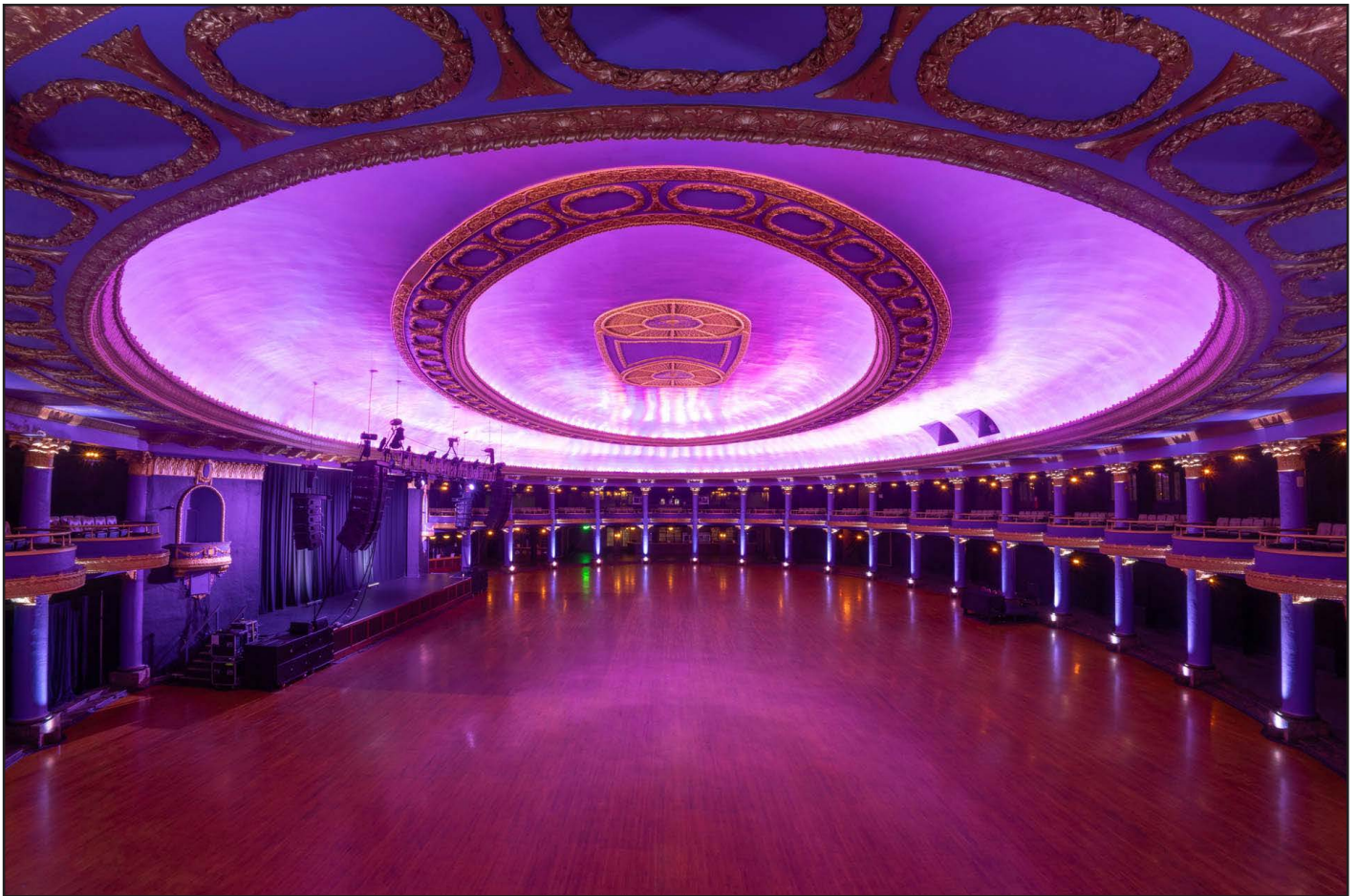
NEW FOR 2025:

- **FULLY AIR CONDITIONED INDOOR SPACE WITH IMPROVED AIRFLOW THROUGHOUT THE BUILDING**
- **5 TRUCK LOADING DOCK WITH SECURE PARKING PLUS ADDITIONAL SPACE FOR 15 MOTOR VEHICLES OR SEMI TRUCKS**

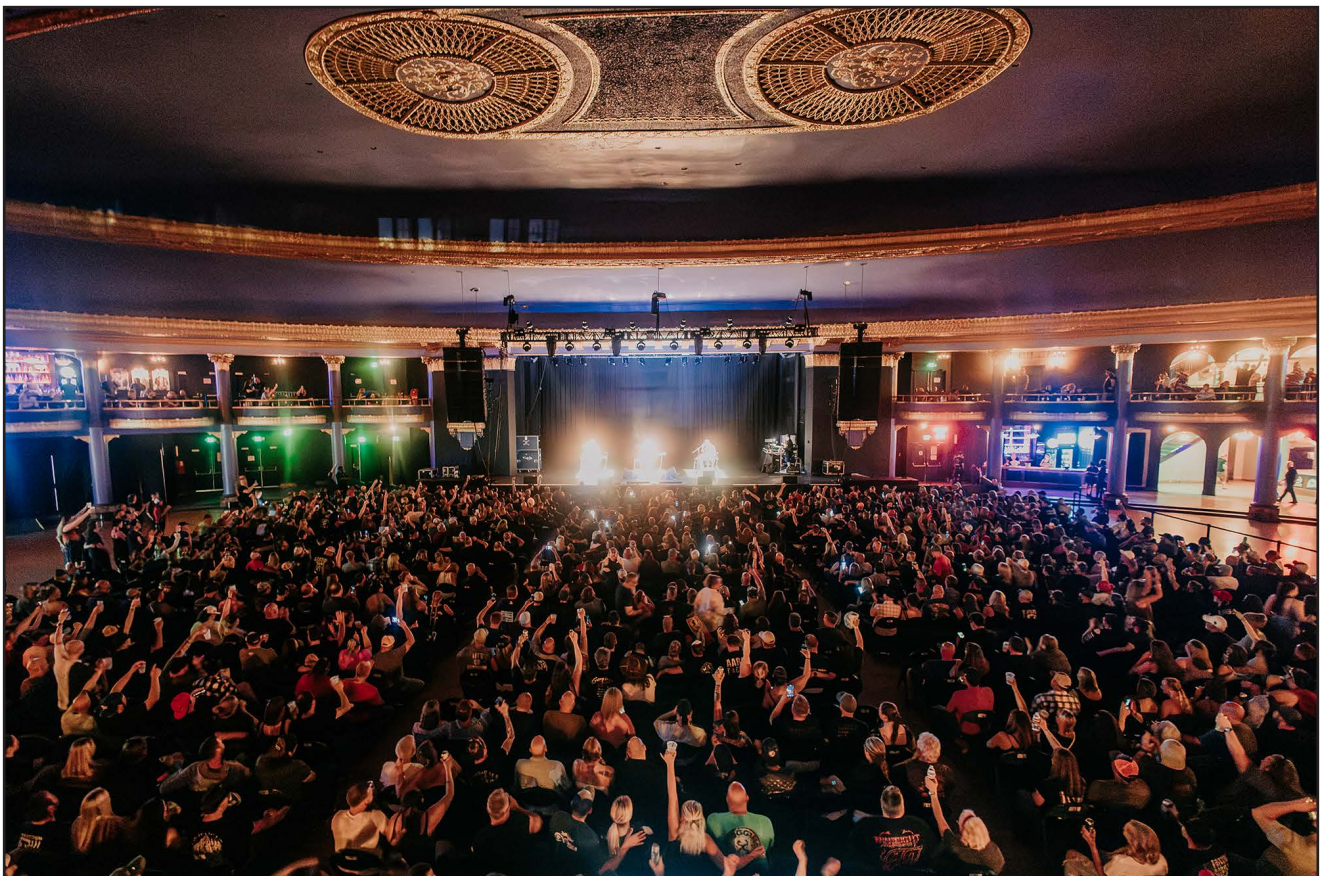
ABOUT THE EAGLES BALLROOM

The Spectacular Eagles Ballroom is the crown jewel of The Rave/Eagles Club. Featuring an elegant twenty-five thousand square foot dance floor, The Eagles Ballroom provides a truly unique setting. The premium amongst national acts always make a point to illuminate the Eagles Ballroom.

The Eagles Ballroom also features a VIP Balcony and access to the rooftop Penthouse Lounge. From the elegant domed ceiling, eagle sculptures and intricate trim on the pillars, a concert at The Eagles Ballroom is truly a spectacular experience.



THE EAGLES BALLROOM CAN ACCOMMODATE GENERAL ADMISSION AND SEATED CONCERTS



NEARBY HOTELS, FOOD AND ATTRACTIONS

HOTELS

Ambassador Hotel	2308 W Wisconsin Ave. (472 ft.)
Hilton Milwaukee City Center	509 W Wisconsin Ave. (1.3 mi.)
Double Tree by Hilton Hotel	611 W Wisconsin Ave. (1.3 mi.)
Saint Kate	139 E Kilbourn Ave. (1.8 mi.)
The Iron Horse Hotel	500 W Florida St. (2.6 mi.)
Kimpton Journeyman	310 E Chicago St. (2.7 mi.)

RESTAURANTS

Sobelman's Pub	1900 W. St. Paul Ave. (0.8 mi.)
Oak & Barrel Public House	1033 N. Old World 3rd St. (1.8 mi.)
Jalisco's (Mexican food)	1035 S Cesar E Chavez Dr. (1.8 mi.)
Ian's Pizza	146 E. Juneau Ave. (2.2 mi.)
King and I (Thai)	830 N Old World Third St. (2.3 mi.)
Screaming Tuna (Sushi)	106 W Seeboth St. (2.5 mi.)
Pizza Shuttle	1827 N Farwell Ave. (4.7 mi.)

COFFEE

Starbucks	1610 W Wisconsin Ave. (0.5 mi.)
Dunkin' Donuts	622 W Wisconsin Ave. (1.2 mi.)
Stone Creek	422 N 5 th St. (1.3 mi.)

MAILING/SHIPPING

FedEx Office Print & Ship Center	209 E. Wisconsin Ave. (1.7 mi.)
The UPS Store	1314 S 1st St. (3.1 mi.)

PHARMACY

Walgreens	1600 W Wisconsin Ave. (0.5 mi.)
Walgreens	3522 W Wisconsin Ave. (0.7 mi.)

HARDWARE STORES

Menard's	2101 Miller Park Way (3.6 mi.)
Village Ace Hardware	2179 N Prospect Ave. (4.6 mi.)
Home Depot	150 W Holt Ave. (5.8 mi.)

DRY CLEANING/LAUNDRY

Marquette Coin Laundry	811 N 16 th St. (4.2 mi.)
------------------------	--------------------------------------

OTHER

Potawatomi Hotel & Casino	1721 W Canal St. (1.1 mi.)
Harley-Davidson Museum	400 W Canal St. (2.1 mi.)
American Family Field (Brewers Baseball)	1 Brewers Way (2.4 mi.)
Fiserv Forum (Bucks Basketball)	1111 Vel R. Phillips Ave. (2.4 mi.)
Milwaukee Public Market	400 N Water St. (2.7 mi.)
Milwaukee Art Museum	700 N Art Museum Dr. (3.1 mi.)

DRIVING DIRECTIONS

FROM I-43 HEADED SOUTH, FROM GREEN BAY:

As you approach the Marquette Interchange, use the right two lanes to merge on to I-94 W toward Madison. Take **Exit 309B** for Clybourn St/25th St. Keep right at the fork and follow signs for Clybourn St/Marquette University. Continue North on to 25th Street and turn right onto Wisconsin Ave. The venue is on the right. Enter through the gate on Wisconsin Avenue.

FROM I-94 HEADED NORTH, FROM CHICAGO

As you approach the Marquette Interchange, use the right two lanes to merge on to I-94 W toward Madison. Keep right at the fork and follow signs for Clybourn St/Marquette University. Take **Exit 309B**. Continue on to 25th street and turn right on to Wisconsin Ave. The venue is on the right. Enter through the gate on Wisconsin Avenue.

I-94 NORTHBOUND FROM MITCHELL INTERNATIONAL AIRPORT (MKE)

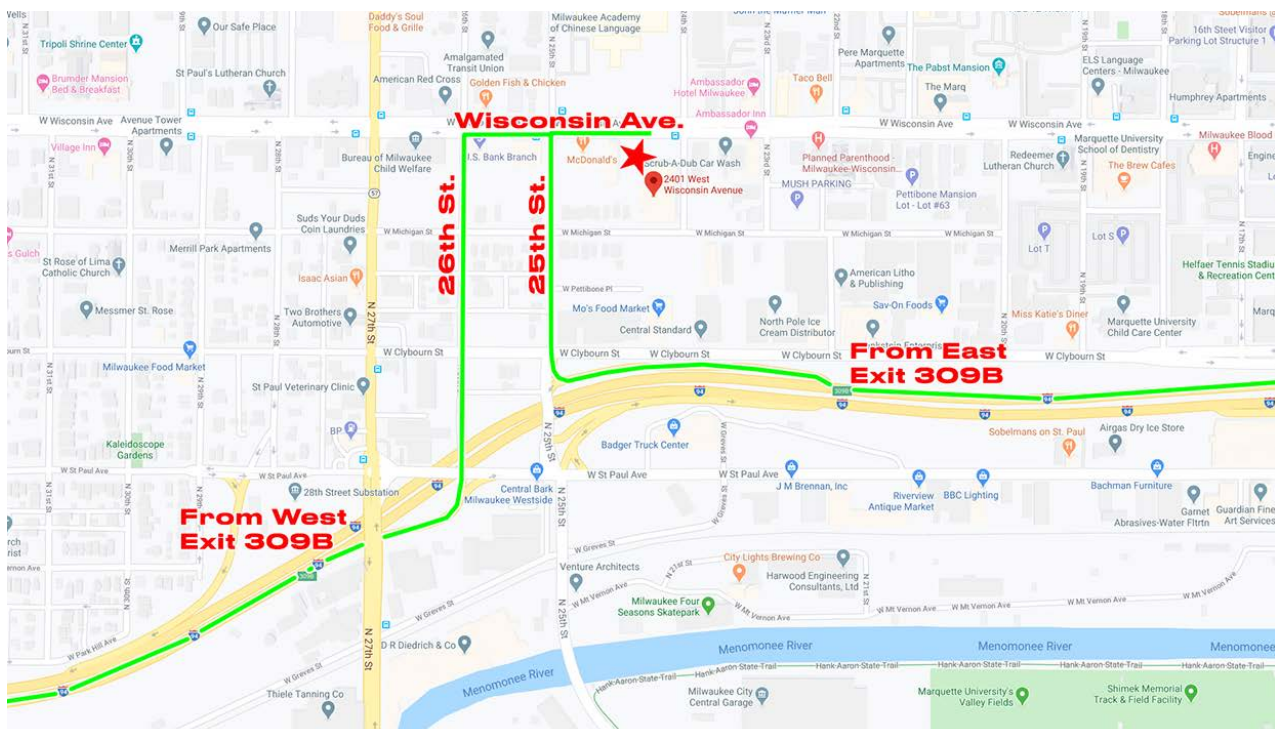
Exit airport and continue straight onto WI-119W, following signs for I-94/Milwaukee/Chicago. Keep Right to stay on WI-119 and merge on to I-94 W Milwaukee. Use the middle lanes to follow signs for I-43 S/I-894 Bypass/Madison/Fond Du Lac. Use the right two lanes to merge on to I-94 W toward Madison. Keep right at the fork and follow signs for Clybourn St/Marquette University. Take **Exit 309B**. Continue on to 25th street and turn right on to Wisconsin Ave. The venue is on the right. Enter through the gate on Wisconsin Avenue.

FOR BUSES AND FRONT LOT PARKING:

GPS address: 2401 W Wisconsin Ave, Milwaukee, WI 53233.

FOR TRUCKS AND LOADING DOCK PARKING:

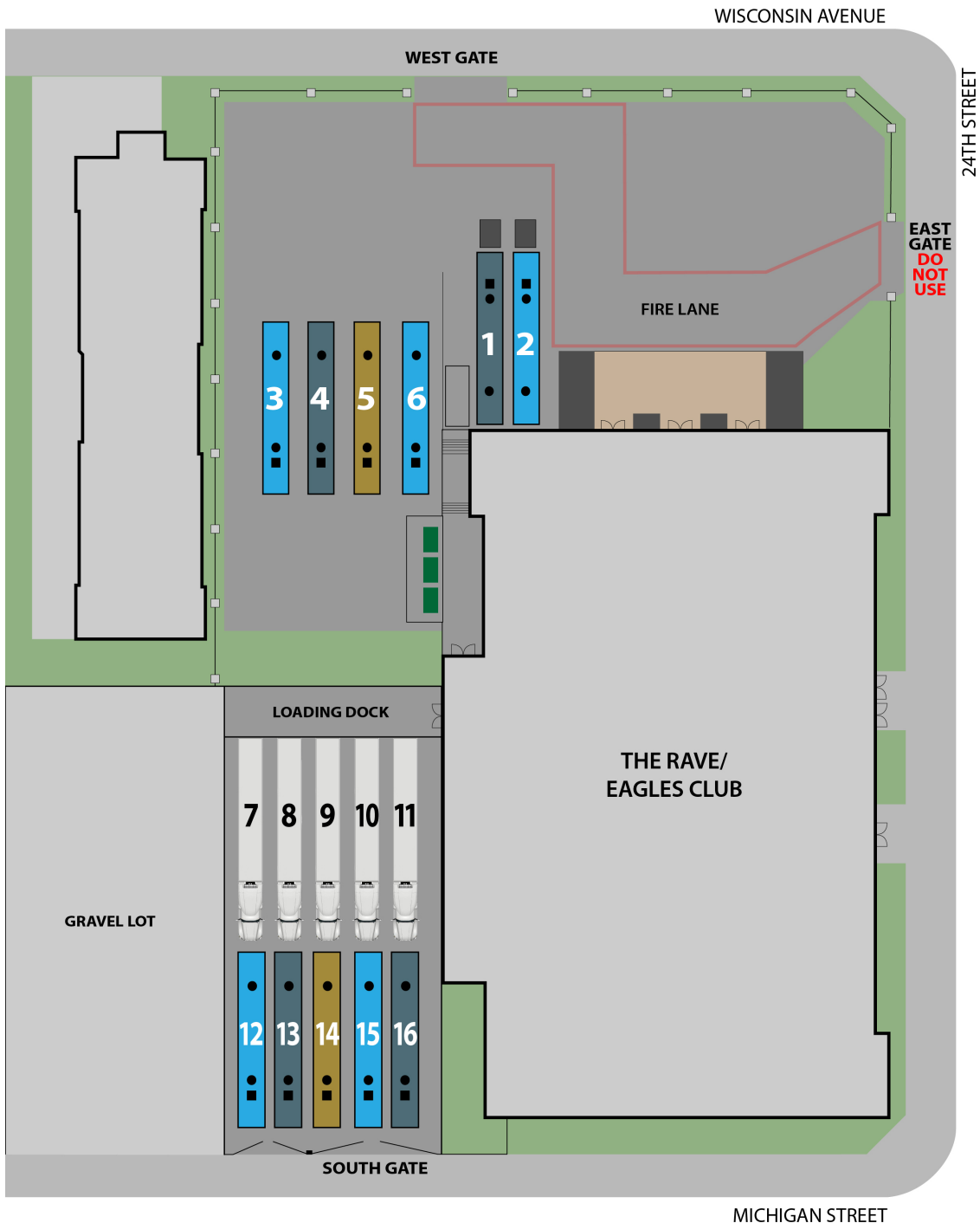
GPS address: 2426 W Michigan St., Milwaukee, WI 53233



PARKING

The Rave/Eagles Club can accommodate many vehicles at one time. The venue may have multiple events operating simultaneously, so it is very important to communicate all parking needs to the Production Manager in advance so they can advise you where to park. Upon arrival please have your driver check in with the front lot attendant so you can be directed to your assigned slot.

We do not have shore power at either the west dock or front lot parking, but there are no restrictions on running generators. There is a water hose in the front of the building.



CREW

The Rave/Eagles Club is a non-union labor venue. Please advance with the Production Manager the staff requirements for your show including but not limited to:

- 1 Front of House Audio Engineer
- 1 Monitor Audio Engineer
- 1 Lighting Director/Master Electrician
- 1 Stage Manager
- 1 Artist Relations Rep/Runner from load in to load out in a personal vehicle
- All Day, Show Call, Spot Ops, and Load In/Load Out Hands
- Up and Down Riggers

The standard crew call for us retains at least two (2) hands and department leads throughout the event. Hands and loaders are not separate or departmentalized, and can function as spot ops or other positions during show calls.

LOAD IN / LOAD OUT DETAILS

THE RAVE HALL AND THE RAVE BAR

The load in entrance is on the northwest side of the building up the ramp directly from trailers. No stairs, two ramps up and one ramp down to venue main floor.

THE EAGLES BALLROOM, THE EAGLES BALLROOM CLUB STAGE, AND THE RAVE II

Your truck will park in the loading dock in the southwest parking lot of the building. Load in is dock level push to the **elevator which is 8'4" deep x 4'4" wide x 6'5" high. Note that this elevator is not standard freight or passenger size.** Please make sure to communicate with venue Production Manager if this presents an issue for any of your items (large set carts, pre-rigged truss, etc). We do have an alternative load-in option for large pieces that do not fit in the elevator.

The Rave/Eagles Club does not own a forklift. If a forklift is needed for stacking items in and out of tour trucks, we will need to rent one as a show expense. Please make sure to advance with venue Production Manager if you will need a forklift for your load in and load out.

SMOKING POLICY

The Rave/Eagles Club has a strict no smoking policy, per City of Milwaukee ordinance. Smoking is not allowed anywhere inside the building. This includes but is not limited to cigarettes, e-cigarettes or vapes. Smoking indoors or outside of designated areas will result in a fine. Please keep all smoking to outdoor areas or inside your vehicles.

ALL AGES POLICY

The Rave/Eagles Club is an all ages venue and must comply with certain local and state restrictions. Please note that at no time are patrons allowed to be served alcohol by performers on stage or to cross the barricade line and/or come on stage. Please make sure all acts refrain from any type of nudity or exposure.

PYROTECHNICS AND SPECIAL EFFECTS

The Rave/Eagles Club cannot legally allow the use of pyrotechnics of any kind in any of our venues. This includes anything with explosive, explosive charge, exposed flame, or any other similar explosive or combustible effects. Cold sparks are included in this list of prohibited items. We cannot allow cold sparks in any of our venues.

The use of CO2 is permitted. We can provide CO2 (siphoned or non-siphoned) tanks with a minimum of one (1) week notice before show day. Any orders made after this point cannot be guaranteed.

The use of paper confetti and streamers are allowed, but must be advanced with venue production. Mylar or glitter elements are prohibited. Any damage to equipment shall be covered under the damage clause listed in this document.

DAMAGE

The tour/ARTIST will be liable for any and all willful damage to The Rave/Eagles Club property caused by your artist, their guests, employees, or representatives. This pertains to any damage to the venues' sound, lights, and video (microphones, stands, speakers, fixtures, consoles, etc.) systems, as well as dressing rooms, public areas, parking lots, pool, fencing etc. Damages will be assessed and deducted from the ARTIST at settlement. The Rave/Eagles Club is listed on the National Register of Historic Places and we appreciate your help in preserving the integrity of this historic landmark.

SETTLEMENT

Troy Dal Santo (troy@therave.com) is your point of contact for settlement. In advance of your day of show, please send us the following information:

- W9, W8-BEN, and/or any other applicable tax forms
- Method of payment (check/wire/cash/combination)

All cash requests must be submitted at minimum one business day ahead of time, but as much notice as possible is appreciated. Wisconsin State has a 5.6% sales tax and a 6% non-resident withholding.

BUY OUTS / CATERING

If your show requires a cash buyout, please advance this with the venue Production Manager. Cash buyouts are no problem, and are in many cases preferred.

We do have the option of catering on some shows, please advance with house Production Manager about your food needs and any special food requests (vegetarian, vegan, gluten free, allergies, etc).

HOSPITALITY

The venue Hospitality Coordinator Gaby Villarreal (gaby@therave.com) or Production Manager Amanda Tullis (amanda@therave.com) will manage your hospitality and catering needs. Please note that in the State of Wisconsin liquor stores close at 9pm, so most night of show additions will need to come from our in house bar which has a limited selection. Many restaurants close at about 10:00pm, so considering your after show needs early is advised. The Production Manager can provide more information on these options as necessary.

MERCHANDISE

Colin O'Connell (colin@therave.com) will be your point of contact for merchandise sales. We will confirm via email what your split percentage is per contract. The Rave/Eagles Club is subject to 5.6% Wisconsin State sales tax on gross sales before split. There are multiple locations throughout the building where merchandise can be sold based upon which rooms are in use. Colin or Amanda will advise upon load in where you are to set up. We can provide racks, WiFi, lights, and tables.

Please note that The Rave/Eagles Club does not allow stickers to be sold, distributed, handed out, thrown off stage, etc. After count in, no comps are to be allowed until after settlement is completed.

If you require The Rave/Eagles Club to provide a merchandise seller, please let us know at least two (2) days ahead of time and we can provide one for you from 90 minutes before doors until count out for a fee.

SOCIAL MEDIA

In this age of the ever-growing importance of Internet presence, we figured we'd include our social media information for you to have in case you, your artist, your social media manager, or anyone else wants to tag us or talk about your upcoming show on line.

- Facebook: facebook.com/therave/
- Twitter: [@therave](https://twitter.com/therave)
- Instagram: [@theraveusa](https://www.instagram.com/theraveusa)
- Snapchat: [theraveusa](https://www.snapchat.com/add/theraveusa)
- Bandsintown: [The Rave/Eagles Club](https://www.bandsintown.com/shows/the-rave-eagles-club)
- TikTok: [@theraveusa](https://www.tiktok.com/@theraveusa)

PRODUCTION

AUDIO

Audio is provided by Sound Decisions as the in-house vendor, but is advanced through the venue Production Manager. This is a standard package system that does not change show to show. It consists of:

16 - (8/side) McCauley MLA3
12 - (6/side) McCauley MLA2 Flown Outfills
16 - (8/side) McCauley CSM88 Subs
4 - McCauley SM72 Front Fills
LM44 Lake Processor at FOH

EAW SM500 Bi-Amped Monitors - availability subject to advance
6 Total Mixes of SM500 Monitors
2 - McCauley SA422-2 Side Fill Tops
2 - McCauley M88 Side Fill Subs
1 - McCauley SA255 Drum Sub

1 - 56 ch snake with 2 passive splits and 1 transformer ISO
1 - 250' 12 ch drive snake
4 - 12 ch sub snakes
4 - cat5 ethernet lines FOH to Stage

For more information about the McCauley system, visit: www.mccauley.com

Consoles are subject to advance with the production manager.
House consoles include the Behringer x32, Midas M32, Avid SC48, and Yamaha M7.

POWER

The Eagles Ballroom has three (3) 3 Phase power services. All services are located upstage right. The house does not have additional feeder to reach touring distros.

400 Amp – House lighting
400 Amp – Tour
200 Amp – House Sound

SPOTLIGHTS

The spotlight booth is directly above FOH with a clear path to the stage for artist illumination. We have gels in-house for the tour Lighting Designer to choose from or we can load tour gels into the gel frames.

4 - Robert Juliat Korrigan HMI 1200's

LIGHTING

DOWNSTAGE TRUSS CONSISTING OF:

- (8) GLP Impression X4
- (4) Robe Robin BMFL Spot
- (4) Elation CUEPIX WW4
- (6) Conventional Lekos w/ ETC Dimmer
- *Lekos only hung if requested in advance*

UPSTAGE TRUSS CONSISTING OF:

- (8) Martin MAC Viper Air FX
- (4) Robe Robin BMFL Spot
- (4) Martin Atomic 3000 LED

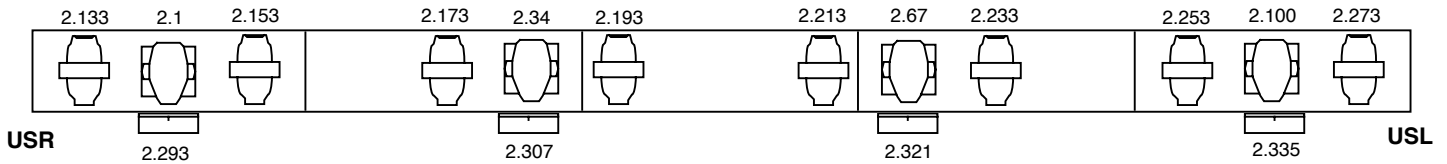
CONTROLLER:

- (1) Martin M1 or ChamSys MQ40
- *subject to availability based upon advance

Networking - sACN
Obsidian Netron EN4
 IP Address: 192.168.0.101
 Subnetmask: 255.255.255.0

The Eagles Ballroom 2024 Lighting Plot

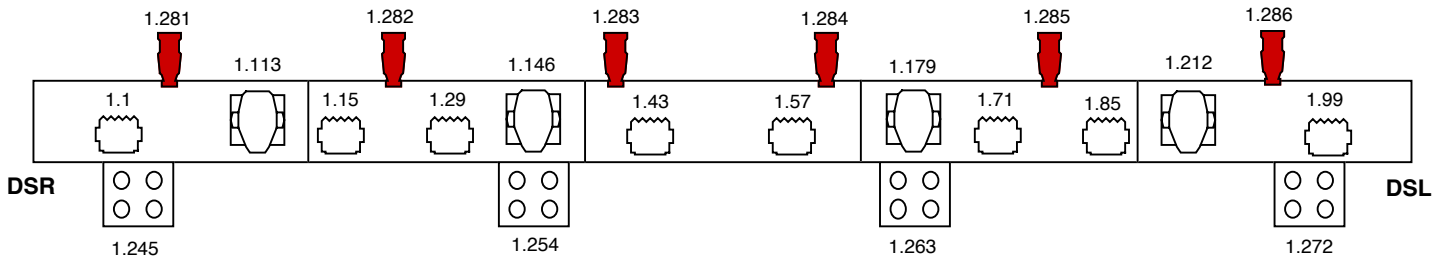
Pillar Lights
Universe 3
 Starting Address: 101
 26 fixtures/Generic 3ch RGB



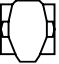
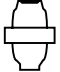

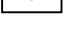
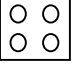

Upstage Truss - Universe 2

Downstage Truss - Universe 1

DS Lekos are not hung unless requested by the tour

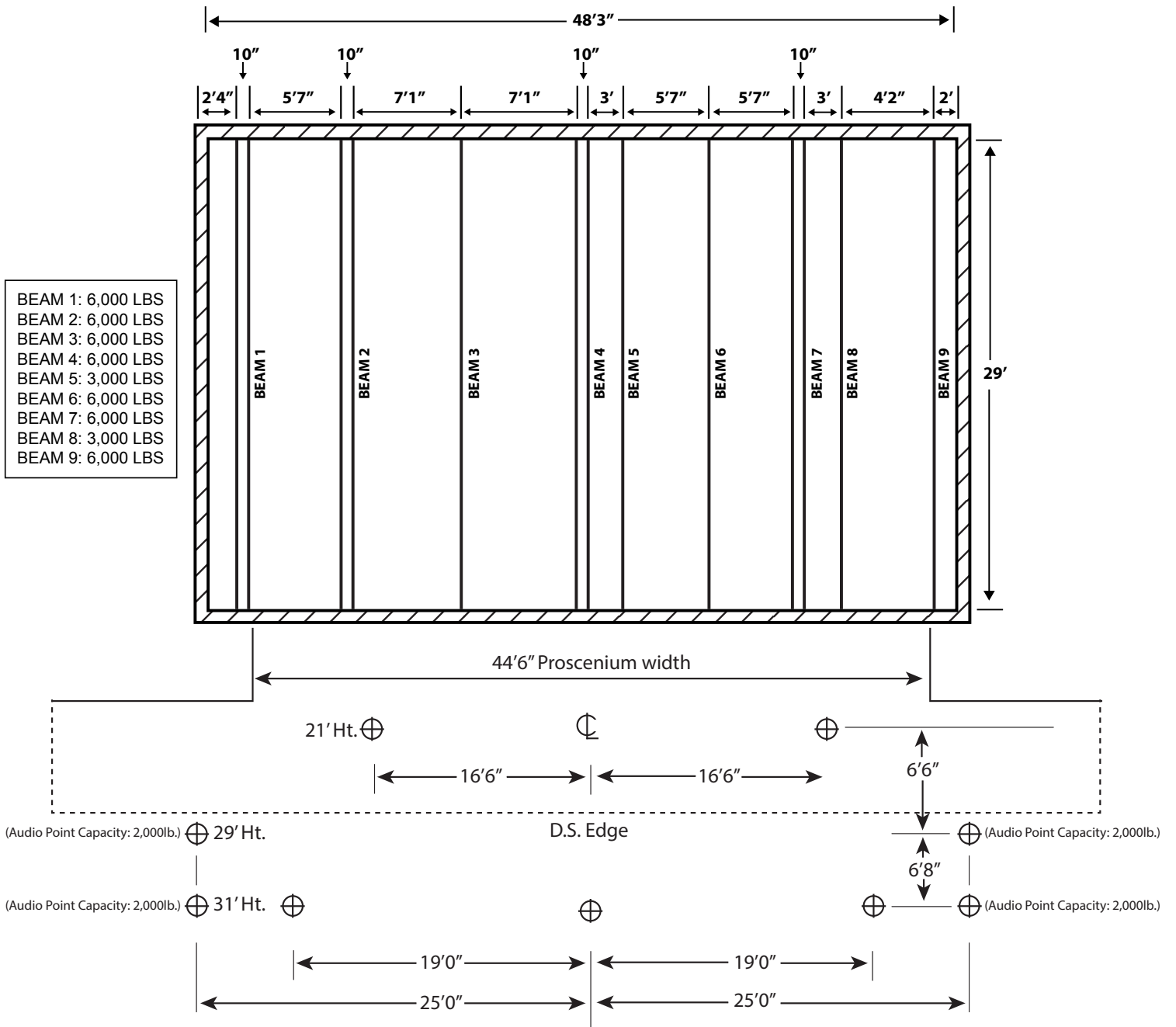


KEY:

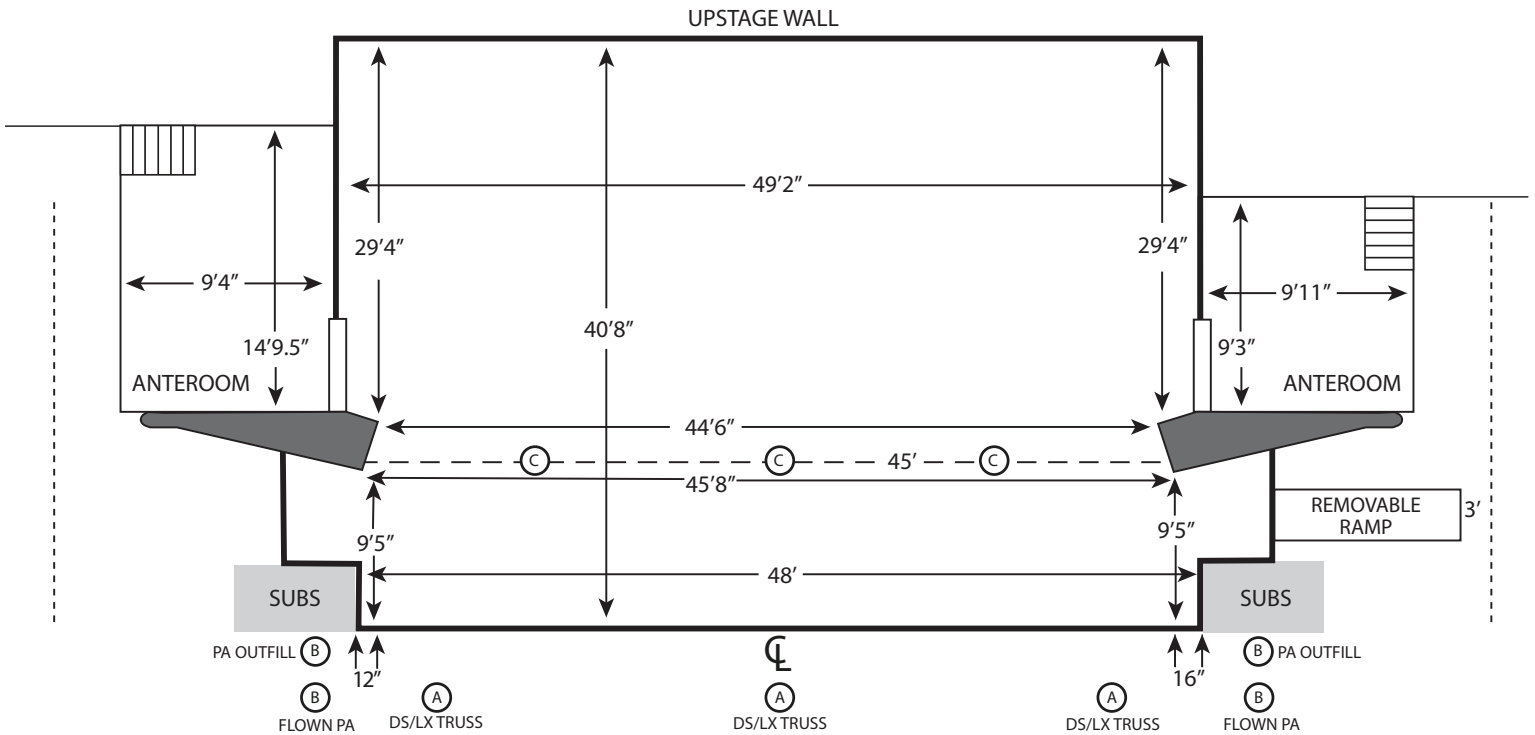
					
Robe Robin BMFL Spot 33 Ch Mode	Martin MAC Viper Air FX 20 Ch Basic Mode	GLP Impression X4 14 Ch Compressed Mode	Martin Atomic 3000 LED 14 Ch Mode	Elation CUEPIX WW4 9 Ch Mode	Leko

RIGGING

If you plan to rig, please advance this with the venue Production Manager as soon as possible. Below is our rigging grid with weight limits to the side, our team can review your needs to help find the best possible solutions on a show-by-show basis.



THE EAGLES BALLROOM STAGE PLOT

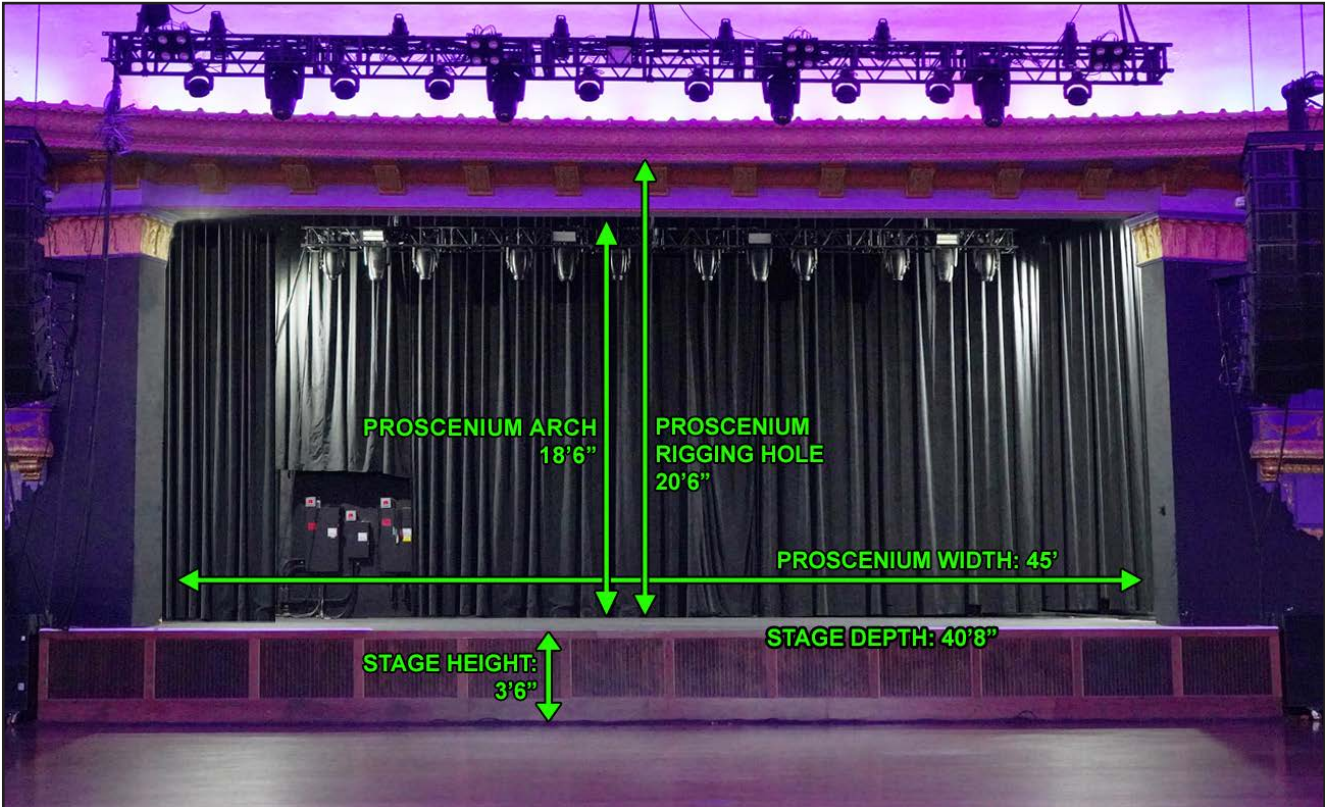


STAGE HEIGHT: 3'6"	(A) DS LX POINTS
SNAKE RUN: 300'	(B) PA OUTFILLS AND ARRAY: 30'2"
PROSCENIUM ARCH:	(C) PROSCENIUM POINTS
HEIGHT: 18'6"	
WIDTH: 44'6"	
GRID: 42'	
HIGH STEEL: 50'6"	
STAGE TO FOH: 82'4"	

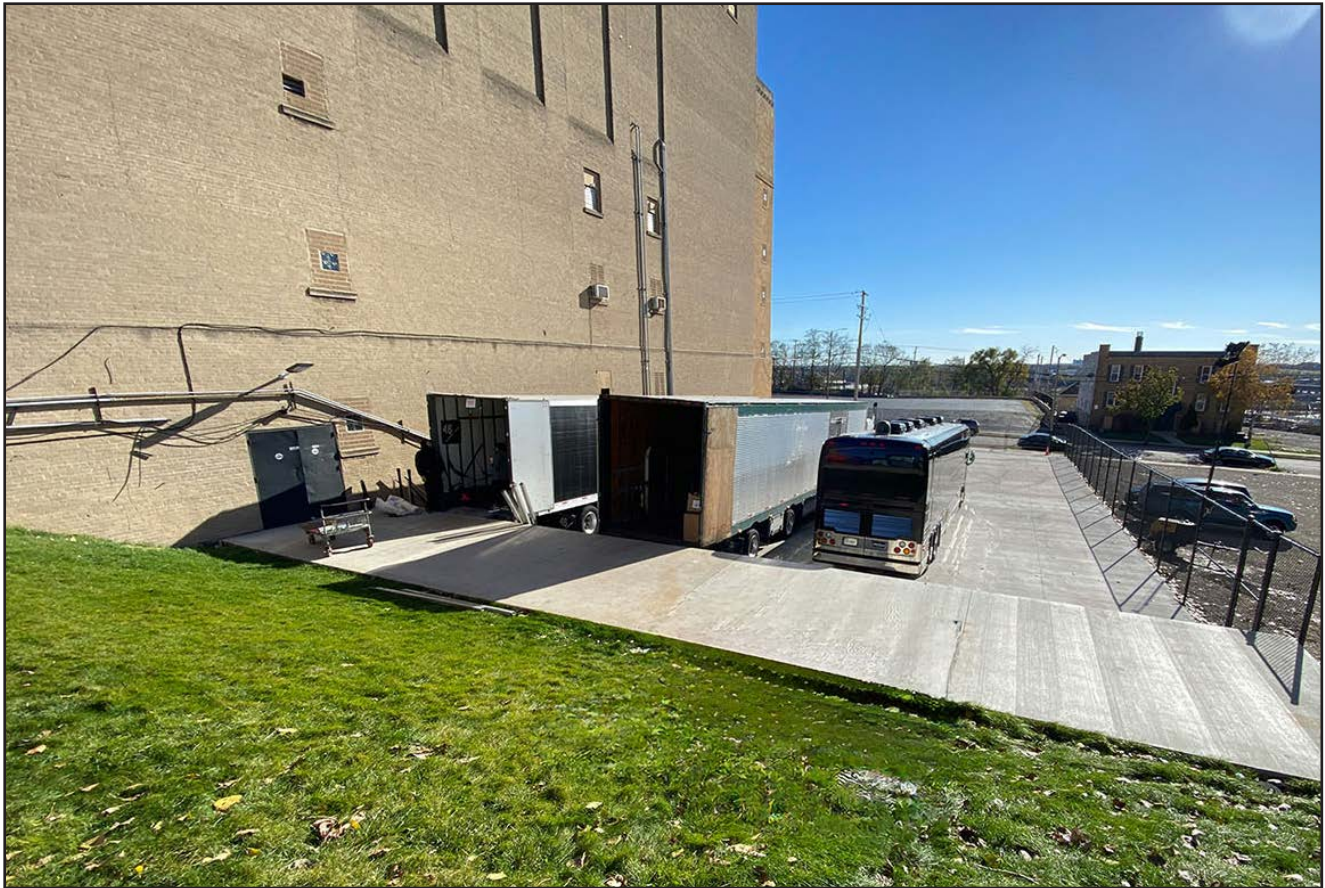
The Eagles Ballroom - Stage to Front of House



The Eagles Ballroom - Stage Dimensions



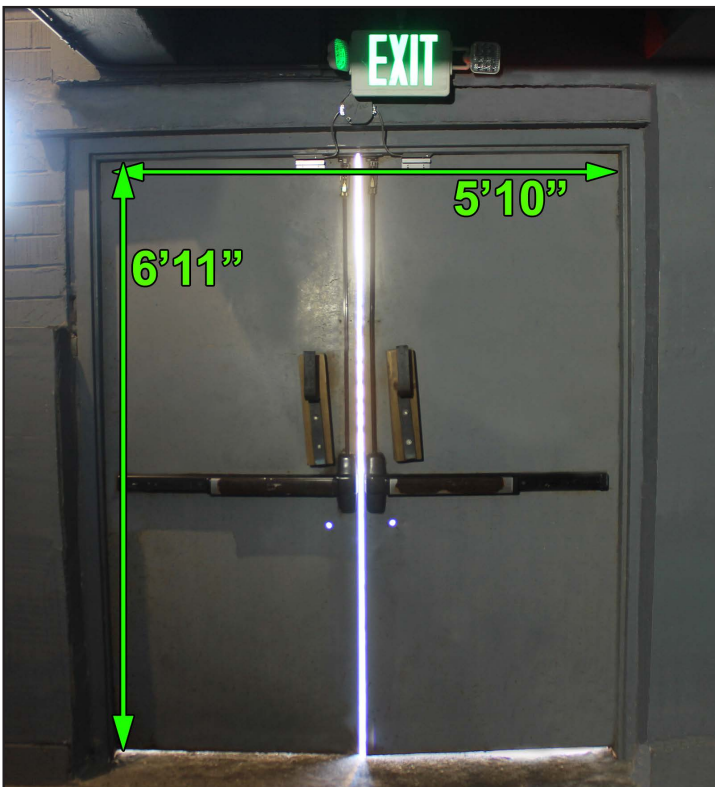
SOUTHWEST LOADING DOCK



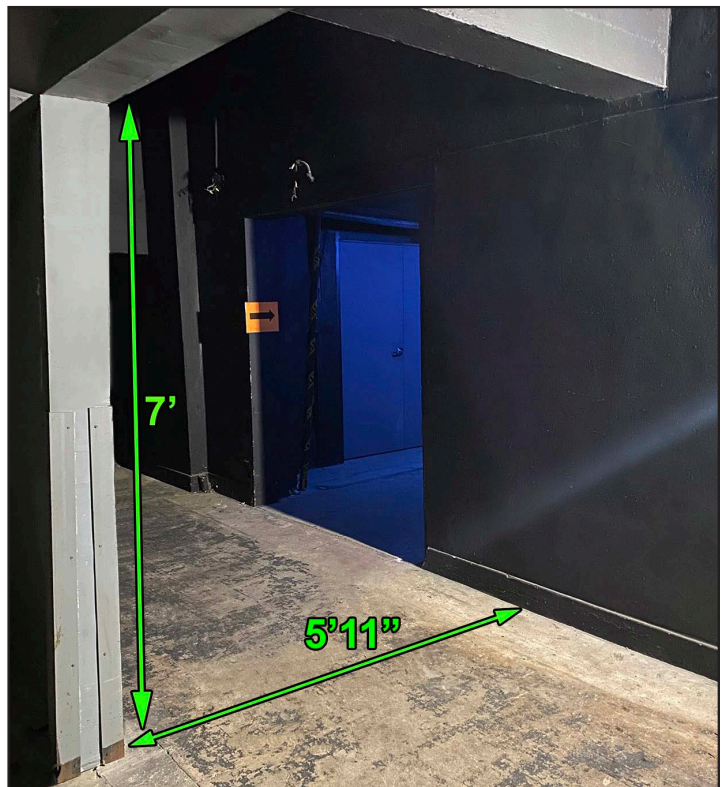
SOUTHWEST DOCK DOOR 1



SOUTHWEST DOCK DOOR 1



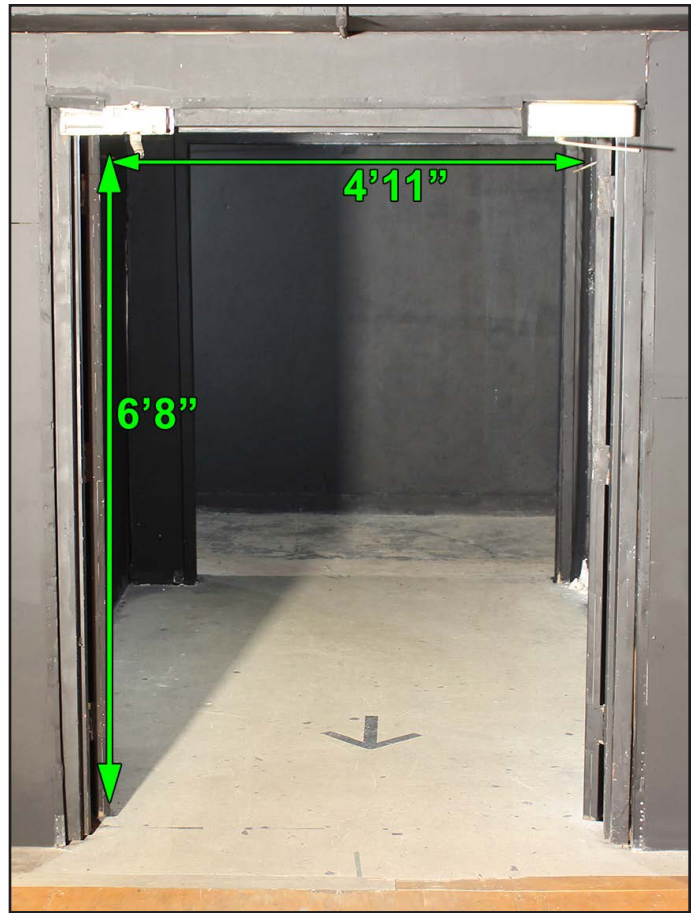
SOUTHWEST DOCK PATH TO HALLWAY



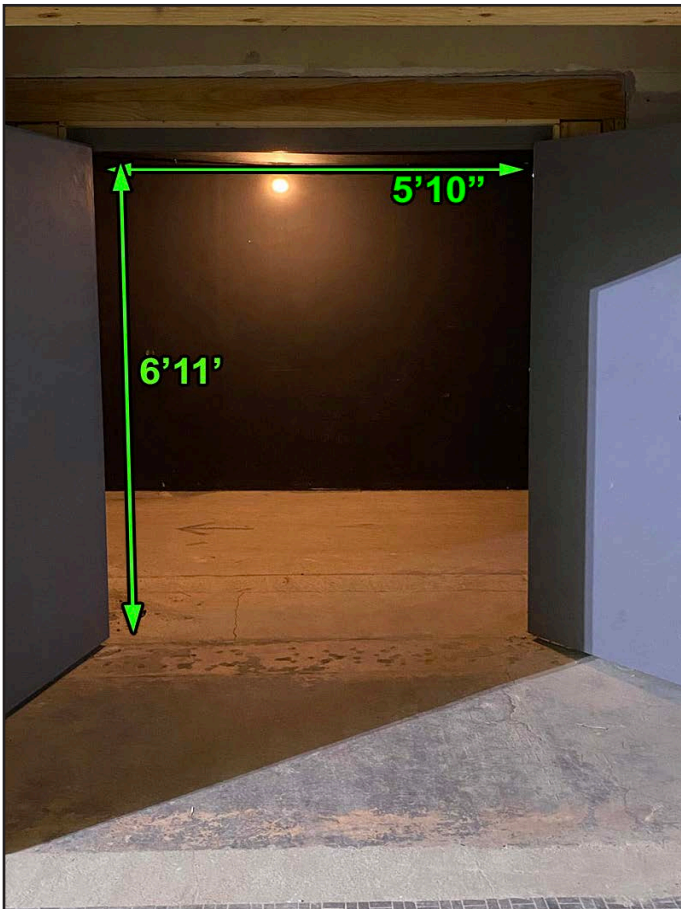
SOUTHWEST DOCK HALLWAY DOOR 1



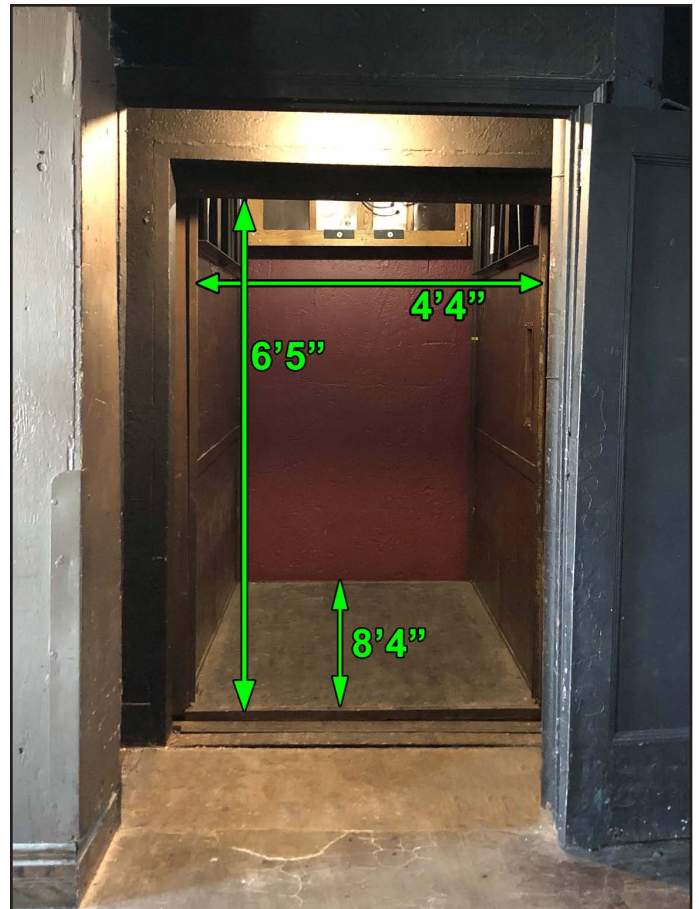
SOUTHWEST DOCK HALLWAY DOOR 2



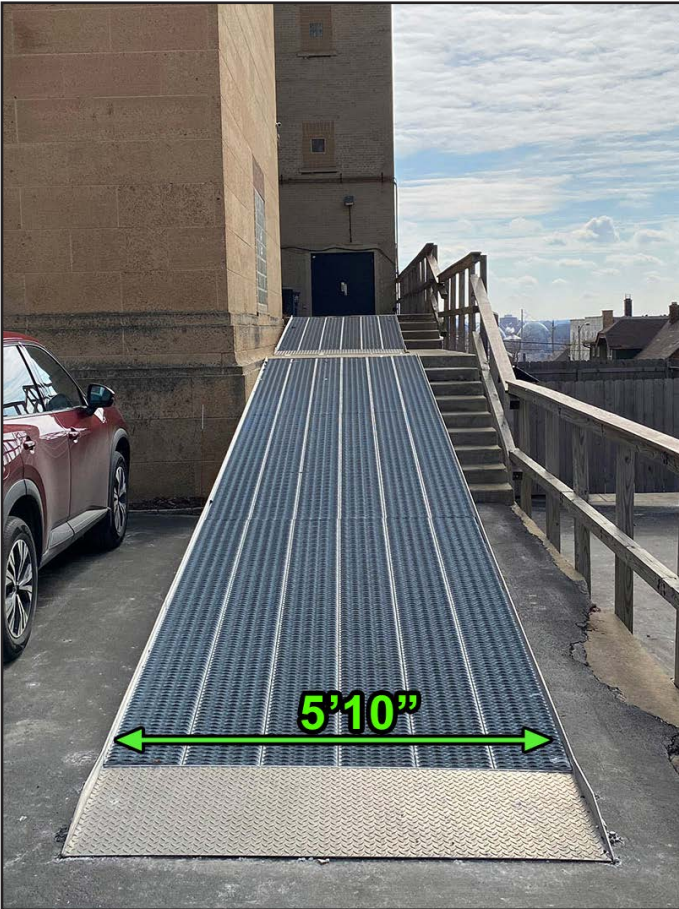
SOUTHWEST DOCK CROSSOVER ROOM



ELEVATOR



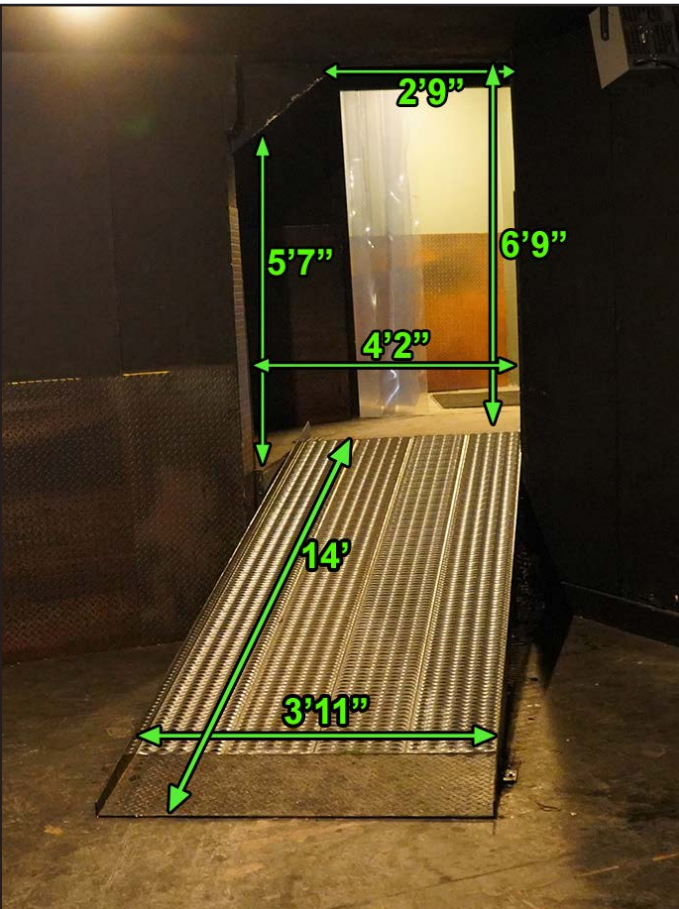
WEST RAMP



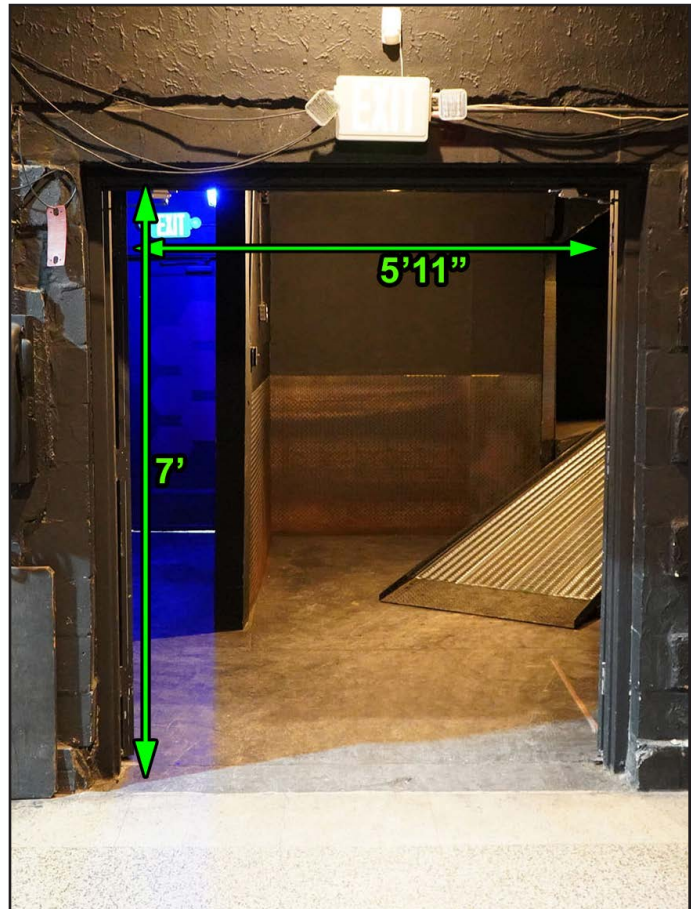
WEST RAMP - DOOR 1



WEST RAMP - DOOR 2

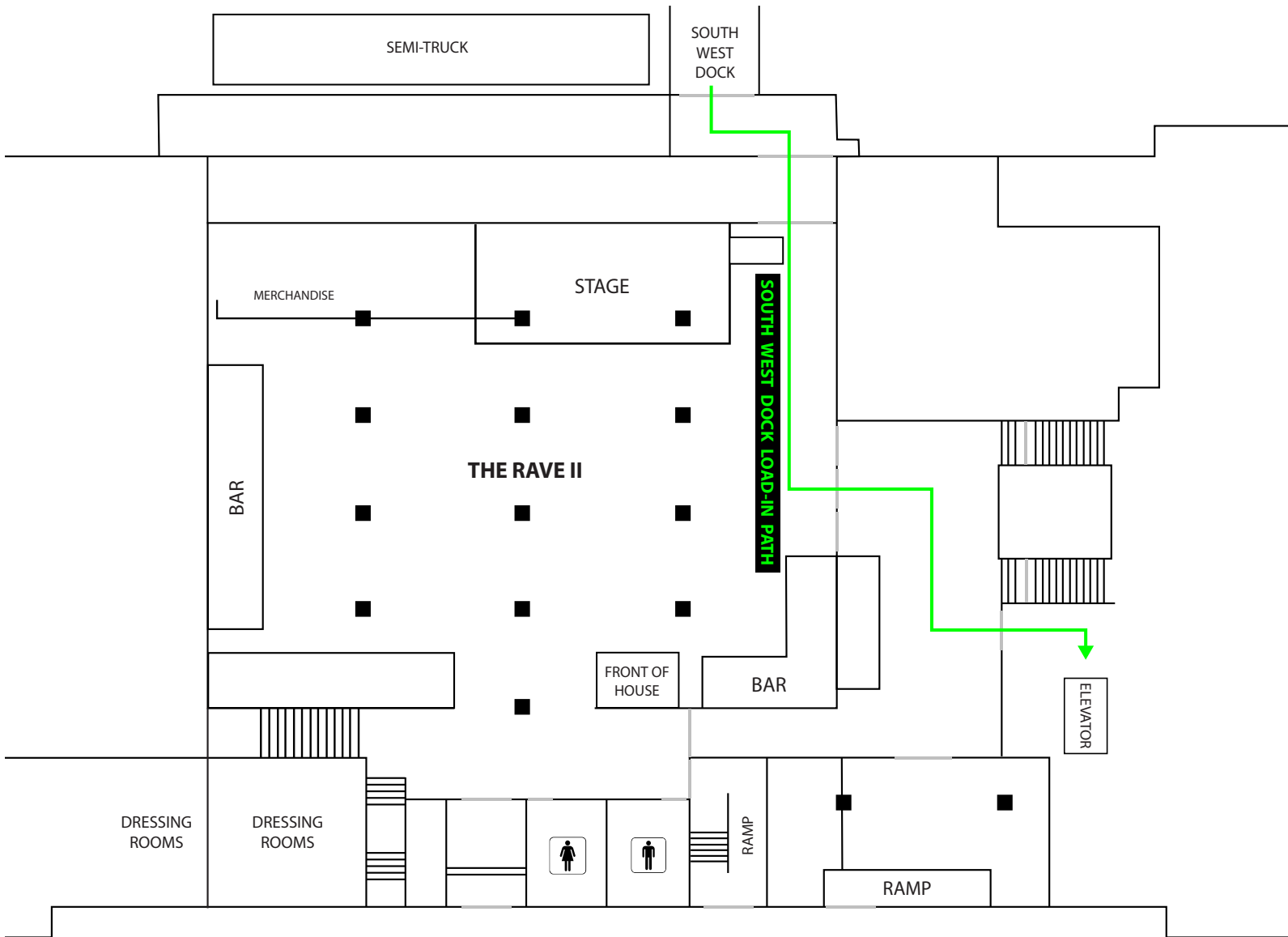


WEST RAMP - DOOR 3



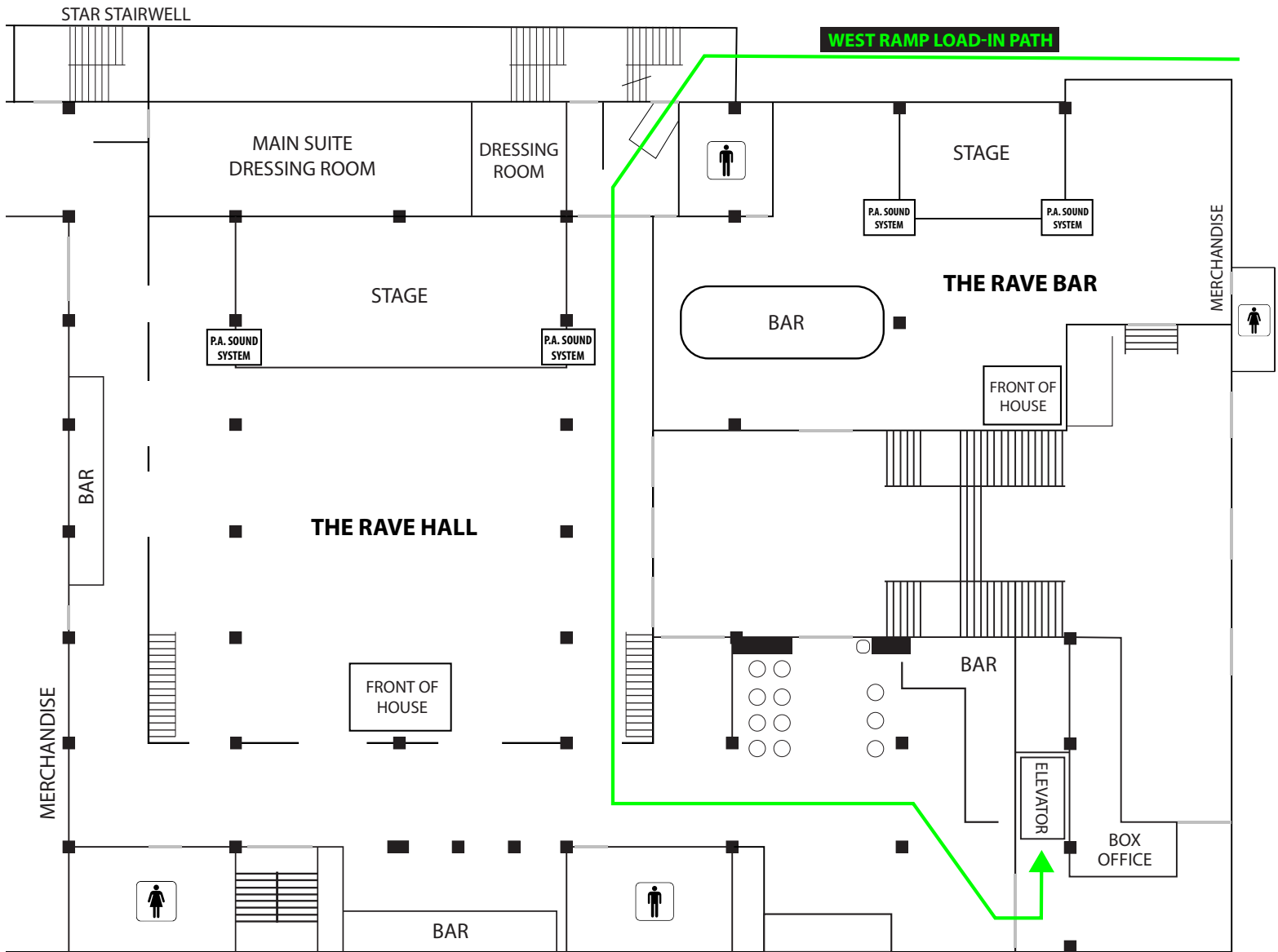
BUILDING MAPS

FLOOR 1: THE RAVE II - BASEMENT LEVEL



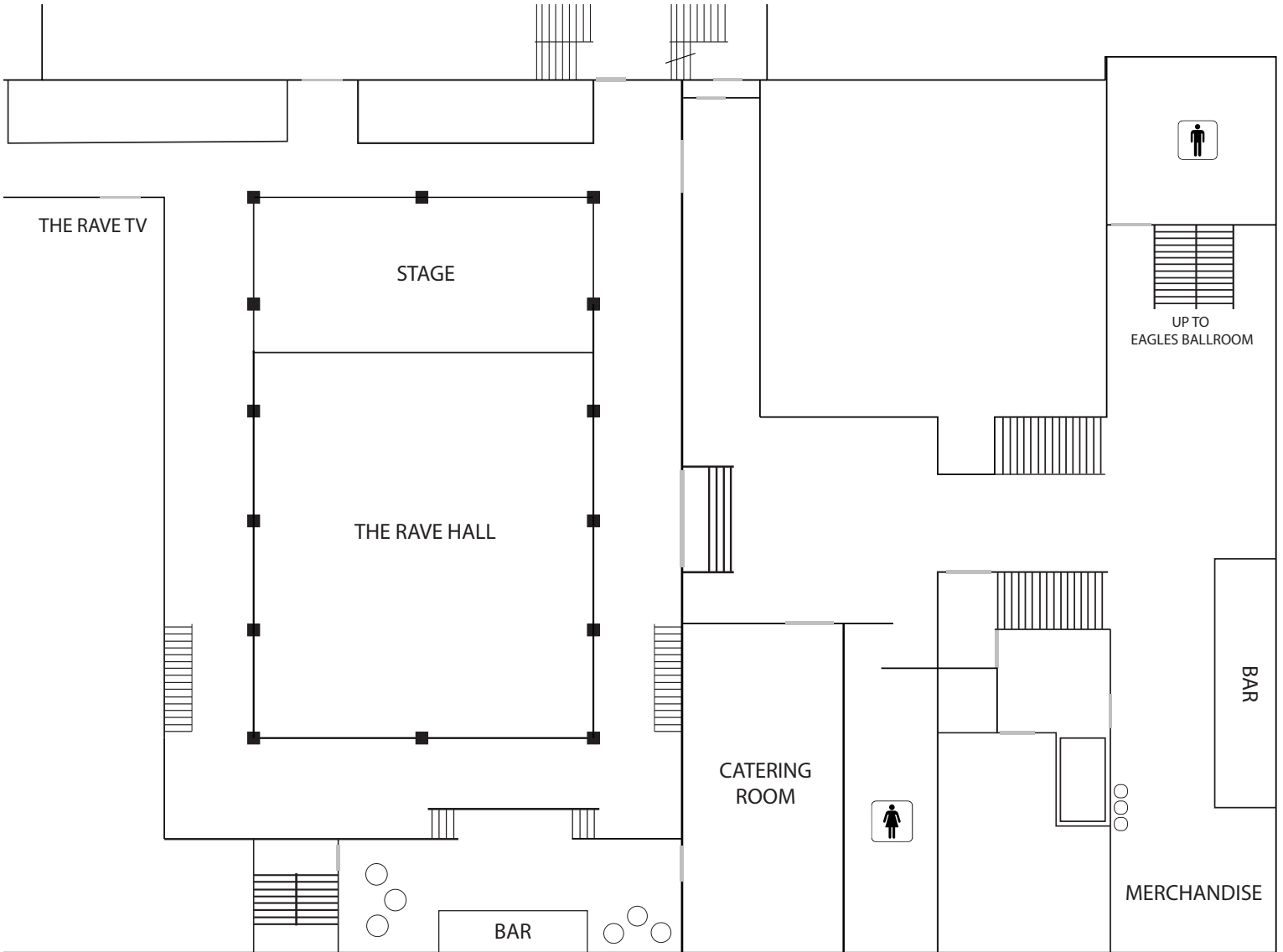
BUILDING MAPS

FLOOR 2: THE RAVE HALL - FLOOR LEVEL



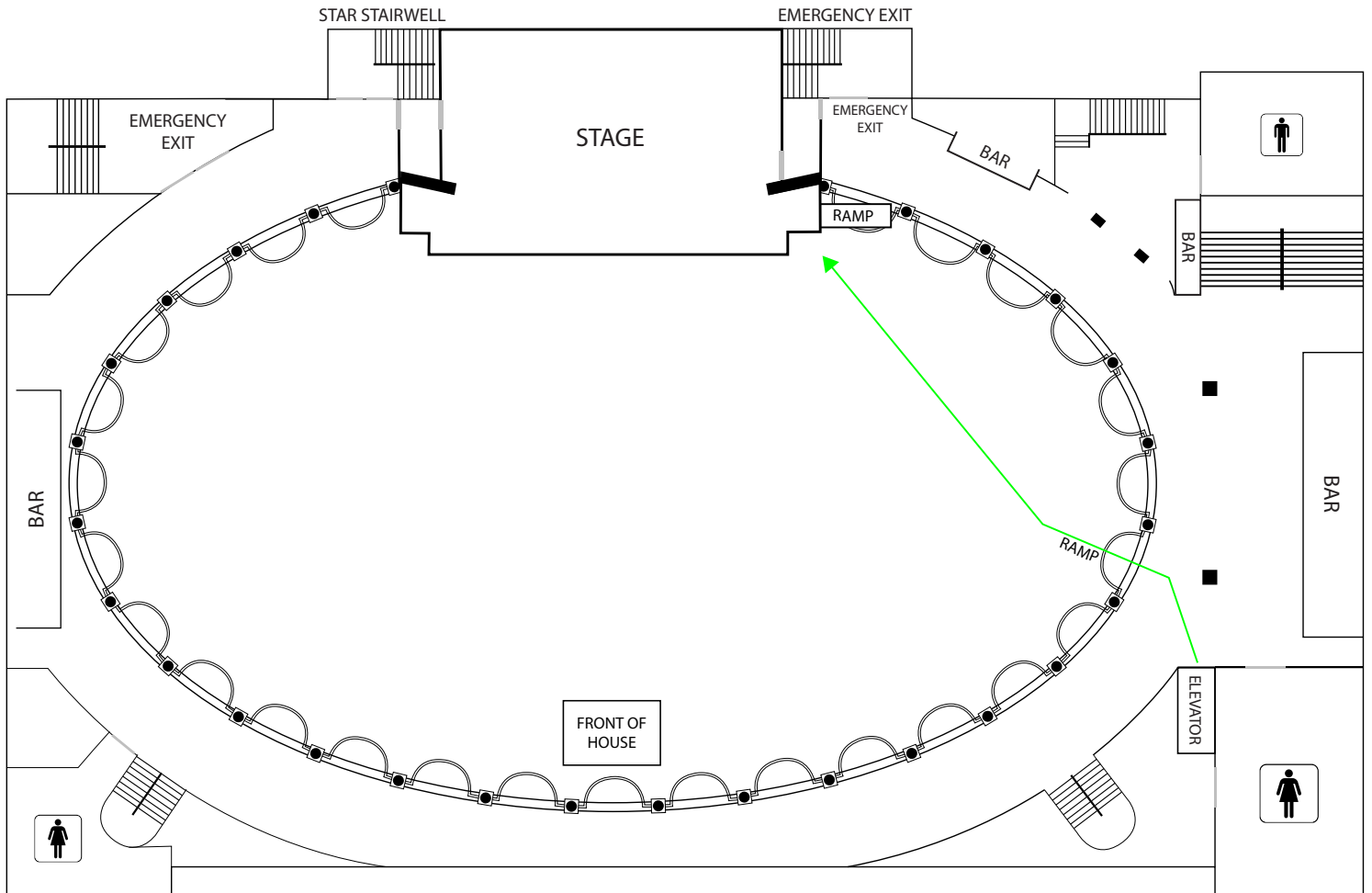
BUILDING MAPS

FLOOR 3: THE RAVE HALL - BALCONY LEVEL



BUILDING MAPS

FLOOR 4: THE EAGLES BALLROOM - FLOOR LEVEL



BUILDING MAPS

FLOOR 5: THE EAGLES BALLROOM - BALCONY LEVEL

